

PROPERTY | WITH PURPOSE

R11,896 per month excl. VAT

R160 per m²



www.spire.co.za

TO LET



Approx 74sqm Office available to let on Ridge road, top of Morningside. The office unit is on the fourth floor. Neat unit with a Decent reception area and 3 separate offices. Ideal for a small admin office, insurance or consulting firm. The unit is airconditioned. Toilet and kitchenette available right outside the unit shared per floor. Well kept building and well managed. Security guard manned entrance foyer, functional lifts and fiber to the building. All parking bays are covered plus visitor bays available. The location is central, easy access to the M4 and close proximity to the Springfield area as property is located on the ridge which overlooks Morningside with Neighboring areas being, Musgrave, Durban CBD, Durban north and...



WEB REF: SCL2202

Mac Khoza | +27845722858 | mack@spire.co.za

PROPERTY | WITH PURPOSE

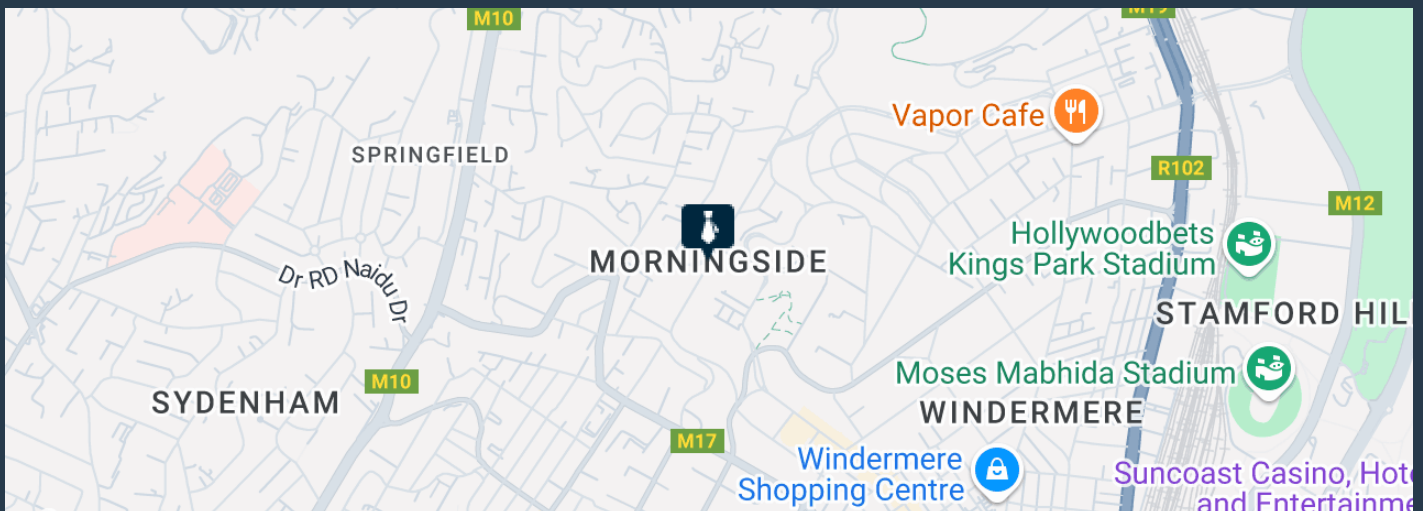
R11,896 per month excl. VAT

R160 per m²



www.spire.co.za

APPROX 74SQM OFFICE SPACE AVAILABLE FOR RENTAL IN MORNINGSIDE,...



PROPERTY DETAILS

▲ Security	Yes	▲ Covered Parking	3.0	▲ Floor Size	75m ²
▲ Air Conditioning	Yes			▲ Land Size	2500
				▲ Zoning	Commercial

WEB REF: SCL2202

Mac Khoza | +27845722858 | mack@spire.co.za

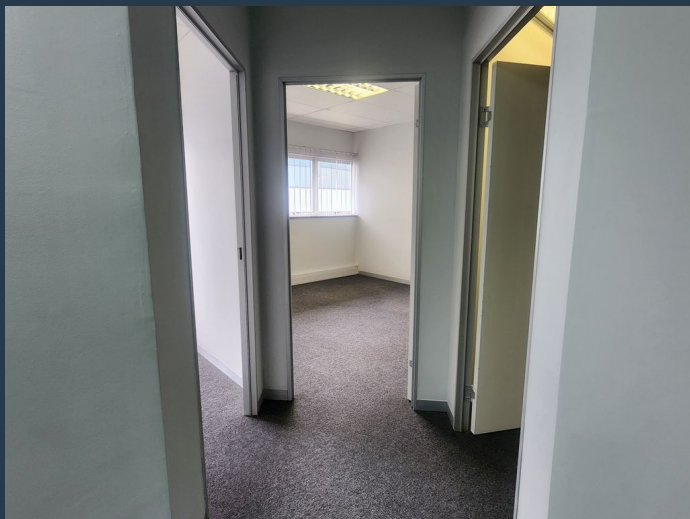
PROPERTY | WITH PURPOSE

R11,896 per month excl. VAT

R160 per m²



www.spire.co.za



CONTACT US



Mac Khoza

Agent

☎ (031) 5368243

📱 +27845722858

✉ mack@spire.co.za

WEB REF: SCL2202

Mac Khoza | +27845722858 | mack@spire.co.za