

PROPERTY | WITH PURPOSE

R196,140 per month excl. VAT

R140 per m²

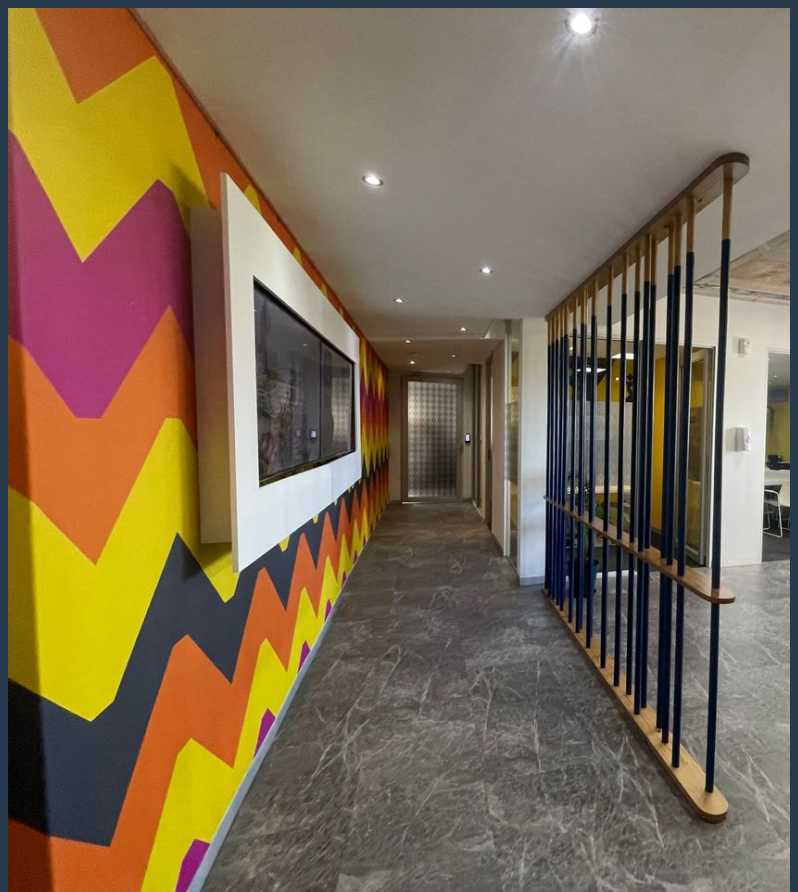
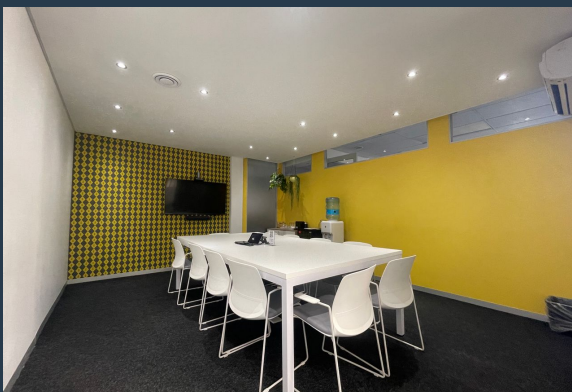


www.spire.co.za

TO LET



1401 m² Office Space for Rent in Wynberg Mews An expansive 1401 m² office space is now available for rent in the heart of Wynberg, offering a prime multi-floor setup with a seamless layout perfect for a thriving business. This modern workspace is move-in ready, featuring fully equipped kitchens, ample parking for tenants, and robust 24-hour security to ensure a safe and convenient working environment. Designed to foster productivity and collaboration, this office space provides all the essentials for a professional setting. Renting office space in Wynberg offers a unique opportunity to be part of a vibrant and strategically located business district. Known for its accessibility, Wynberg provides excellent transport links and proximity to...



WEB REF: SCL2154

Logan Du Pessis | 0736449934 | logand@spire.co.za

PROPERTY | WITH PURPOSE

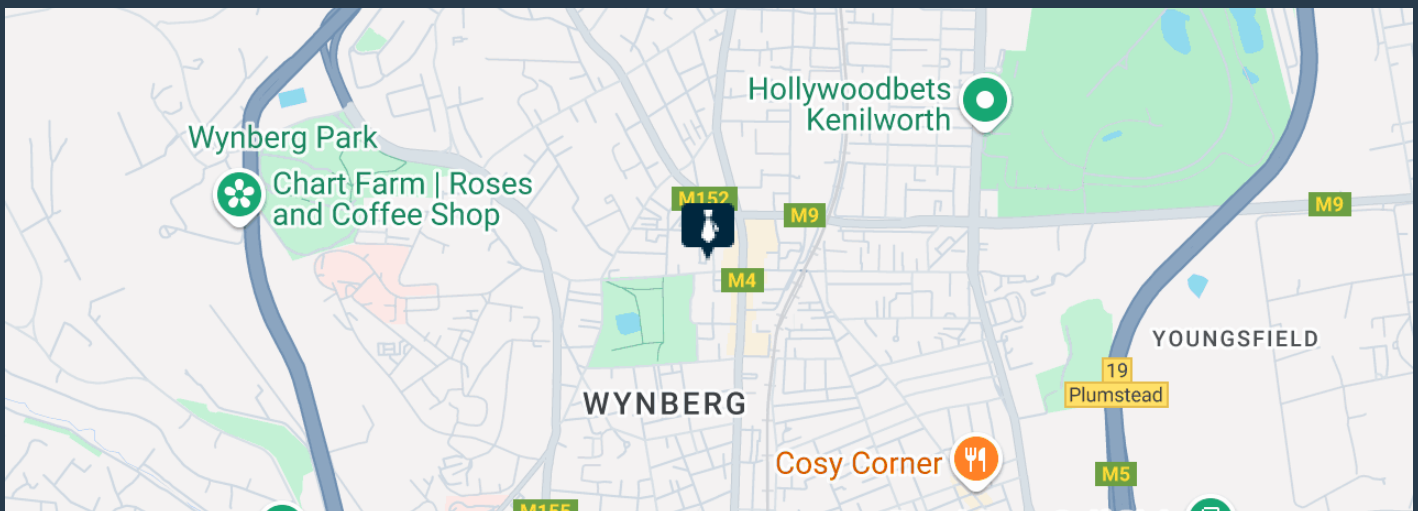
R196,140 per month excl. VAT

R140 per m²



www.spire.co.za

1401 M² OFFICE SPACE FOR RENT IN WYNBERG MEWS



PROPERTY DETAILS

▲ Floor Size	1401m ²
▲ Zoning	Commercial

WEB REF: SCL2154

Logan Du Pessis | 0736449934 | logand@spire.co.za

PROPERTY | WITH PURPOSE

R196,140 per month excl. VAT
R140 per m²



www.spire.co.za



CONTACT US



Logan Du Pessis
Agent

☎ (021) 6854020
📱 0736449934
✉ logand@spire.co.za



Kevin Hellyer
Candidate Property Practitioner

☎ (021) 6854020
📱 061 484 5578
✉ kevinh@spire.co.za