

PROPERTY | WITH PURPOSE

**R20,400** per month excl. VAT

R120 per m<sup>2</sup>



[www.spire.co.za](http://www.spire.co.za)

**TO LET**

Office Space for Rent at Wynberg Mews Discover an exceptional 170 m<sup>2</sup> office space available for rent on the 3rd floor of Wynberg Mews. This fully fitted office is designed to cater to all your business needs, providing a seamless move-in experience. The space features modern partitioned offices, ensuring privacy and efficiency for your team. Additionally, tenants will benefit from ample parking facilities, making commuting hassle-free for both employees and clients. With its contemporary design and prime location, this office space is an ideal choice for businesses seeking a prestigious address in Wynberg. Wynberg is a vibrant and dynamic suburb that offers a perfect blend of business and leisure. Renting an office in Wynberg Mews means...



WEB REF: SCL1900

Logan Du Pessis | 0736449934 | [logand@spire.co.za](mailto:logand@spire.co.za)

PROPERTY | WITH PURPOSE

**R20,400** per month excl. VAT

R120 per m<sup>2</sup>



[www.spire.co.za](http://www.spire.co.za)

## OFFICE SPACE TO RENT IN WYNBERG



### PROPERTY DETAILS

▲ Floor Size	170m <sup>2</sup>
▲ Zoning	Commercial

WEB REF: SCL1900

Logan Du Pessis | 0736449934 | [logand@spire.co.za](mailto:logand@spire.co.za)



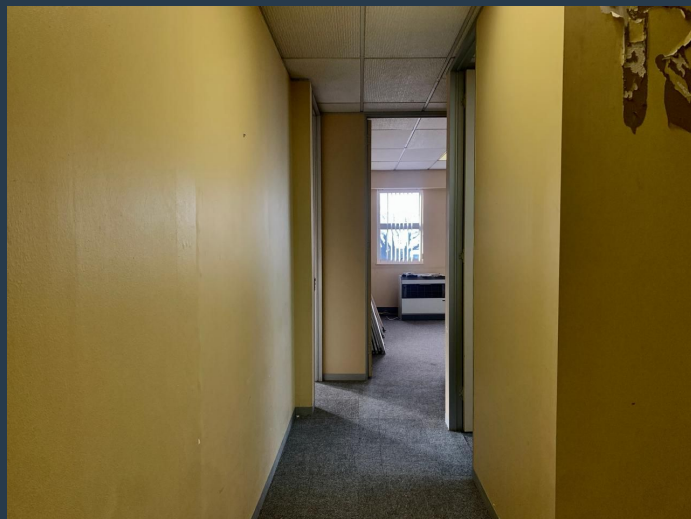
PROPERTY | WITH PURPOSE

**R20,400** per month excl. VAT

R120 per m<sup>2</sup>



[www.spire.co.za](http://www.spire.co.za)



## CONTACT US



**Logan Du Pessis**  
Agent

☎ (021) 6854020

📱 0736449934

✉ [logand@spire.co.za](mailto:logand@spire.co.za)



**Kevin Hellyer**  
Candidate Property Practitioner

☎ (021) 6854020

📱 061 484 5578

✉ [kevinh@spire.co.za](mailto:kevinh@spire.co.za)

WEB REF: SCL1900

Logan Du Pessis | 0736449934 | [logand@spire.co.za](mailto:logand@spire.co.za)