

PROPERTY | WITH PURPOSE

R72,590 per month excl. VAT

R170 per m²

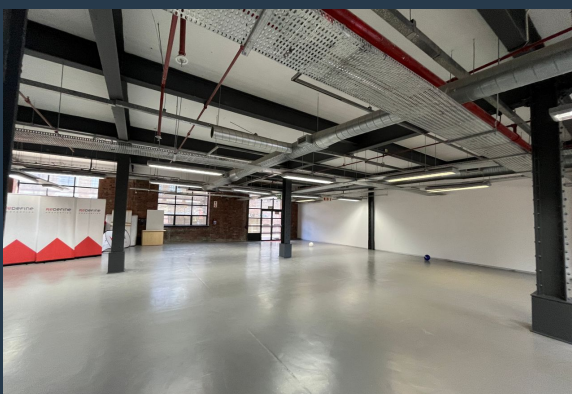


www.spire.co.za

TO LET



427 square meter office to rent in Black River Park. Features of this office include: - Open plan layout-black canvas to fit your office to specification. - Right next to the park's coffee shop (Vida e Caffè) - Plenty of visitor and tenant parking - Top address for your business to attract high end visitors and staff. Join the likes of multinational & national tenants such as Addidas, Performance Brands, Allan Gray and Dimension Data to join this dynamic tenant mix. - Internal Bathrooms -24-hour access -24- hour security. Black River Park is a highly sought after office precinct and units are snatched up quickly, please contact to arrange a viewing.



WEB REF: SCL2016

Kevin Hellyer | 061 484 5578 | kevinh@spire.co.za

PROPERTY | WITH PURPOSE

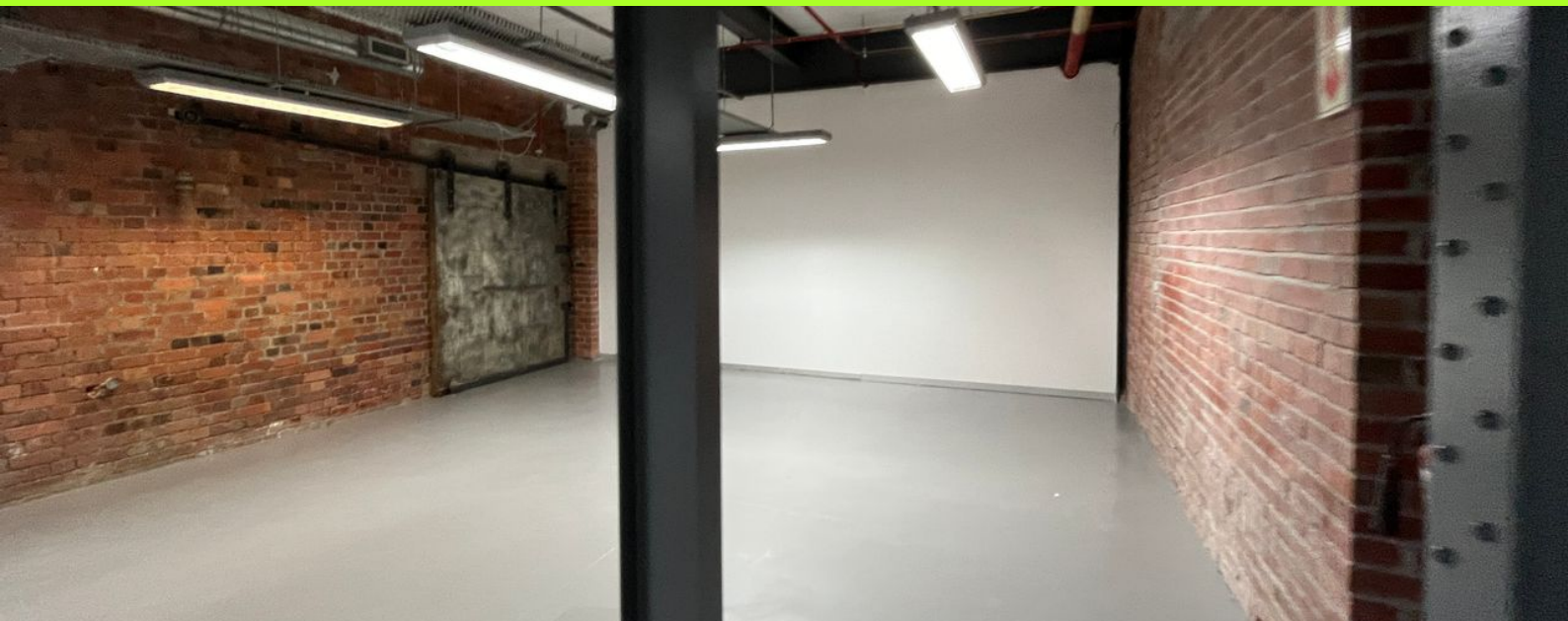
R72,590 per month excl. VAT

R170 per m²



www.spire.co.za

OFFICE TO RENT IN BLACK RIVER PARK



PROPERTY DETAILS

▲ Floor Size	427m ²
▲ Zoning	Commercial

WEB REF: SCL2016

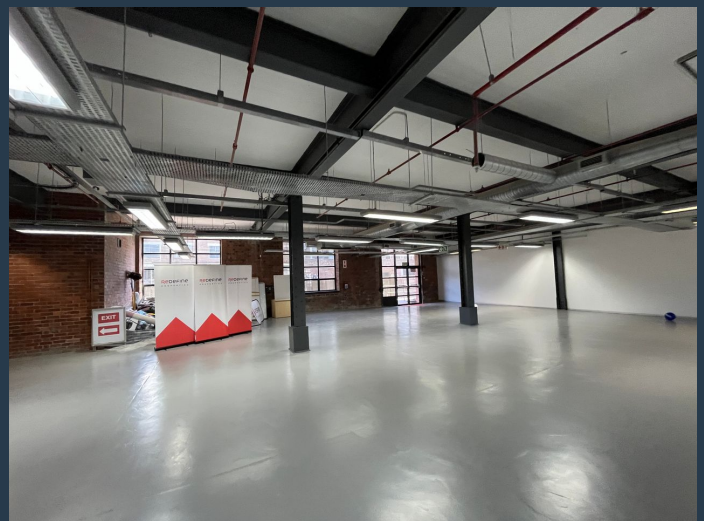
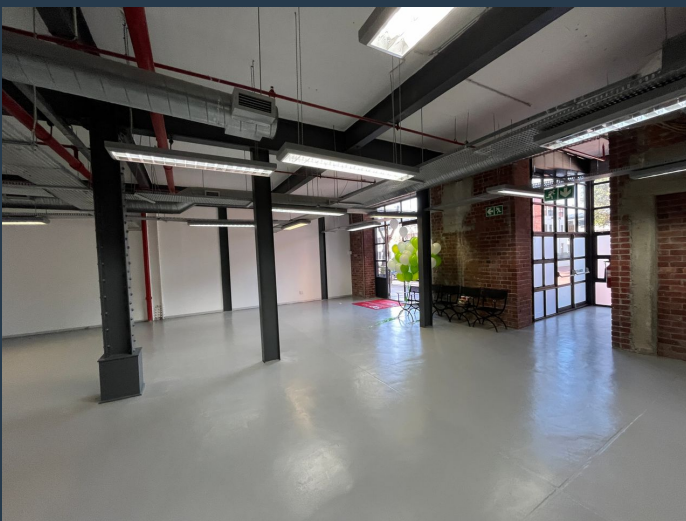
Kevin Hellyer | 061 484 5578 | kevinh@spire.co.za

PROPERTY | WITH PURPOSE

R72,590 per month excl. VAT
R170 per m²



www.spire.co.za



CONTACT US



Kevin Hellyer

Candidate Property Practitioner

☎ (021) 6854020

📱 061 484 5578

✉ kevinh@spire.co.za

WEB REF: SCL2016

Kevin Hellyer | 061 484 5578 | kevinh@spire.co.za