

PROPERTY | WITH PURPOSE

R429,000 per month excl. VAT

R165 per m²

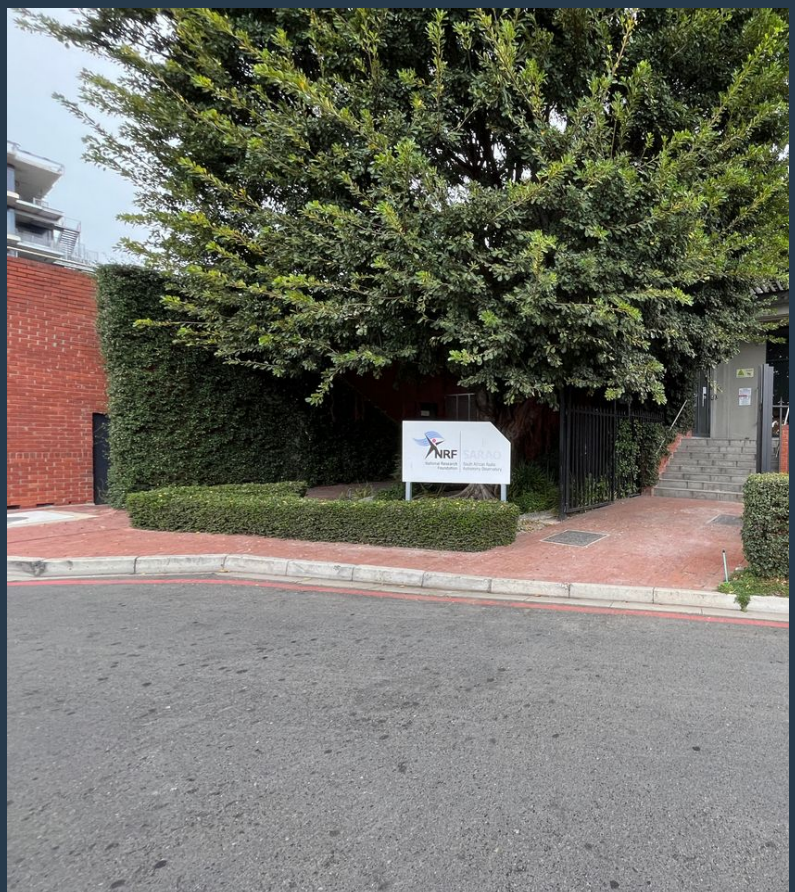
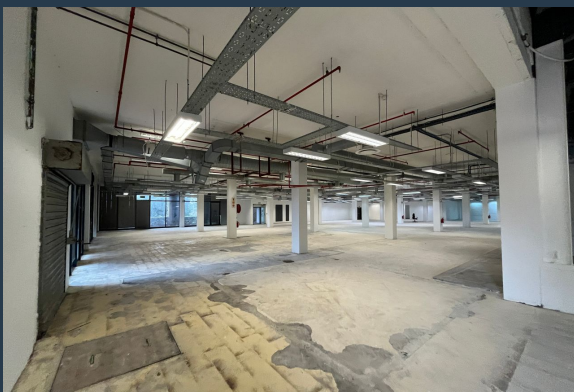


www.spire.co.za

TO LET



2600m² to let in Black River Park, Observatory. Open-plan commercial space of 2600m² to let on the ground floor in the North Park section of Black River Park, Observatory, Cape Town. Formerly housing a research center, this space is currently being white-boxed and will be ready for move-in on August 1st. This versatile property can be taken as is or subdivided to suit your business needs. Key features include six bathrooms (male, female, and disabled, all with showers), a kitchenette, two loading bays, and a balcony/patio wrapping around the majority of the unit. Parking availability is ample with four bays per 100m² at R1300 for unallocated bays and R1500 for allocated bays. This highly sought-after office park offers a prime location...



WEB REF: SCL2005

Kevin Hellyer | 061 484 5578 | kevinh@spire.co.za

PROPERTY | WITH PURPOSE

R429,000 per month excl. VAT

R165 per m²



www.spire.co.za

COMMERCIAL SPACE TO LET IN BLACK RIVER PARK



PROPERTY DETAILS

| | |
|--------------|--------------------|
| ▲ Floor Size | 2600m ² |
| ▲ Zoning | Commercial |

WEB REF: SCL2005

Kevin Hellyer | 061 484 5578 | kevinh@spire.co.za

PROPERTY | WITH PURPOSE

R429,000 per month excl. VAT

R165 per m²



www.spire.co.za



CONTACT US



Kevin Hellyer

Candidate Property Practitioner

📞 (021) 6854020

📱 061 484 5578

✉️ kevinh@spire.co.za

WEB REF: SCL2005

Kevin Hellyer | 061 484 5578 | kevinh@spire.co.za