

PROPERTY | WITH PURPOSE

**R70,550** per month excl. VAT

**R170** per m<sup>2</sup>

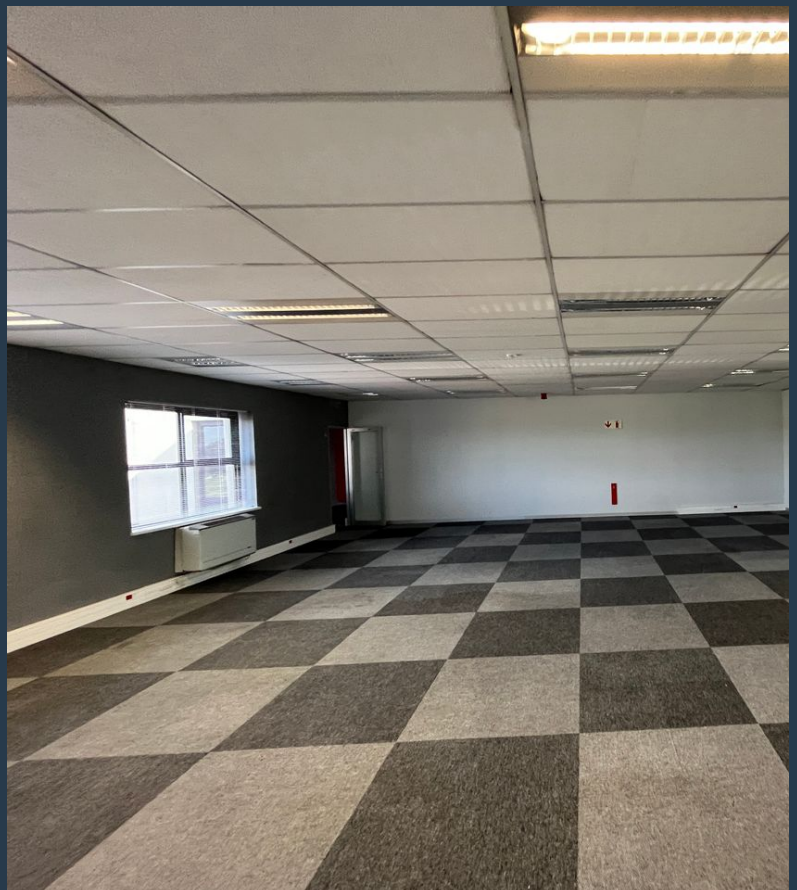
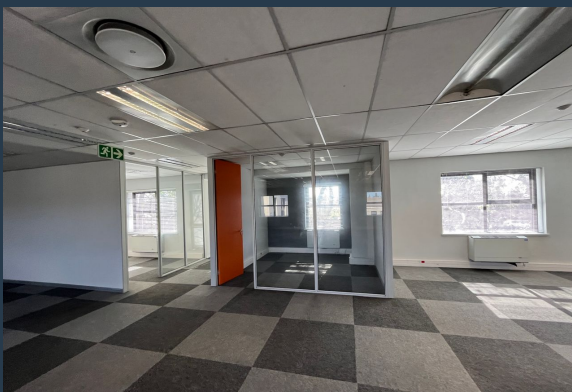


[www.spire.co.za](http://www.spire.co.za)

**TO LET**



415 m<sup>2</sup> Office to Rent at River Park in Mowbray. This open-plan office unit, divided into four suites, promotes productivity with ample natural light and a well-structured design. River Park's prime location offers easy access to the N2 and M5, ensuring a hassle-free commute. Renowned for its A-Grade office spaces and top-notch facilities, the park provides a secure and inviting environment with 24/7 security and access control. Surrounded by picturesque views, River Park is the ideal choice for businesses seeking a prestigious and productive workspace. Contact us today to schedule a viewing and secure your new office space at River Park, Mowbray. Discover exceptional office space available for lease at River Park, located alongside the N2...



WEB REF: SCL2034

Kevin Hellyer | 061 484 5578 | [kevinh@spire.co.za](mailto:kevinh@spire.co.za)

PROPERTY | WITH PURPOSE

**R70,550** per month excl. VAT

R170 per m<sup>2</sup>



[www.spire.co.za](http://www.spire.co.za)

## 415 M<sup>2</sup> OFFICE TO RENT RIVER PARK I MOWBRAY



### PROPERTY DETAILS

▲ Floor Size	415m <sup>2</sup>
▲ Land Size	415
▲ Zoning	Commercial

WEB REF: SCL2034

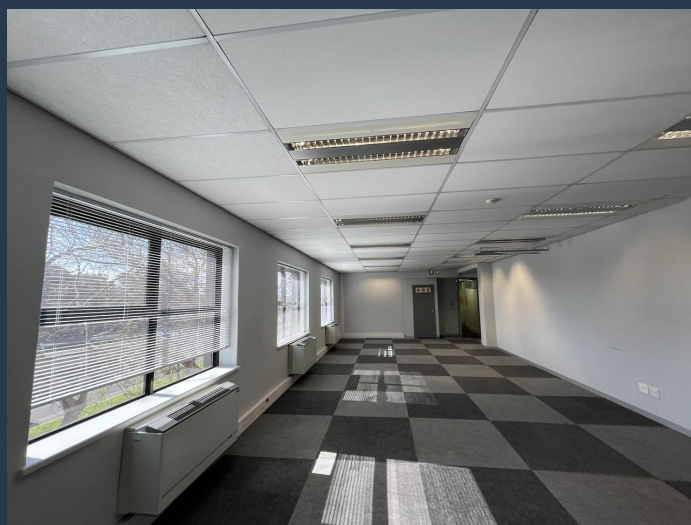
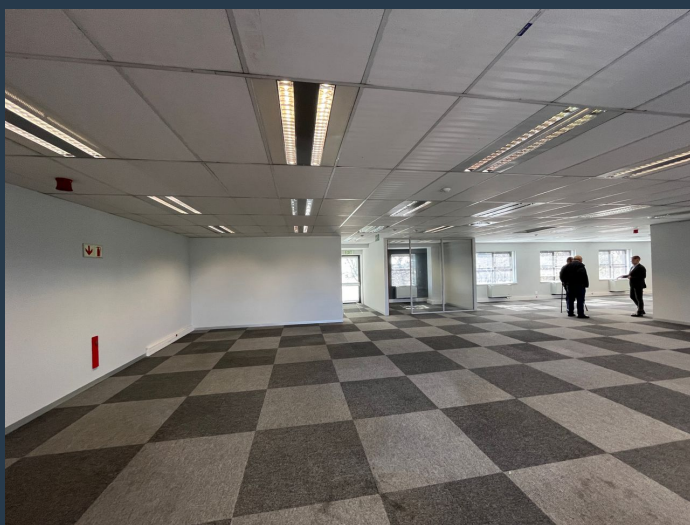
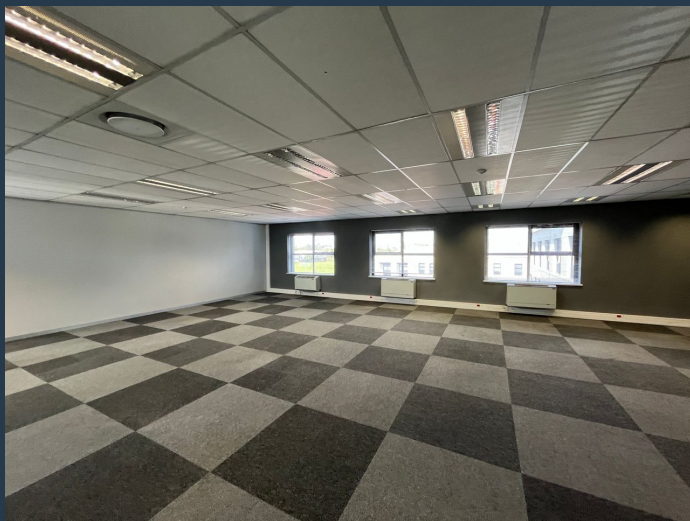
Kevin Hellyer | 061 484 5578 | [kevinh@spire.co.za](mailto:kevinh@spire.co.za)

PROPERTY | WITH PURPOSE

**R70,550** per month excl. VAT  
R170 per m<sup>2</sup>



[www.spire.co.za](http://www.spire.co.za)



## CONTACT US



**Kevin Hellyer**

Candidate Property Practitioner

☎ (021) 6854020

📱 061 484 5578

✉ [kevinh@spire.co.za](mailto:kevinh@spire.co.za)

WEB REF: SCL2034

Kevin Hellyer | 061 484 5578 | [kevinh@spire.co.za](mailto:kevinh@spire.co.za)