

PROPERTY | WITH PURPOSE

R60,350 per month excl. VAT

R170 per m²



www.spire.co.za

TO LET



355 square meter ground floor office to let in Mowbray. River Park is ideally situated just off Liesbeek Parkway and the N2, offering excellent security and the added bonus of free visitor parking. This prime location ensures easy access and convenience for your business operations. The layout of this space includes a welcoming reception area, a boardroom, a pause area and kitchen, a variety of meeting rooms, and an open plan work area, providing a versatile and efficient workspace. Don't miss this opportunity—call anytime to arrange a viewing and secure your spot in River Park today!



WEB REF: SCL1872

Kevin Hellyer | 061 484 5578 | kevinh@spire.co.za

PROPERTY | WITH PURPOSE

R60,350 per month excl. VAT

R170 per m²



www.spire.co.za

OFFICE TO LET IN RIVER PARK MOWBRAY



PROPERTY DETAILS

▲ Floor Size	355m ²
▲ Zoning	Commercial

WEB REF: SCL1872

Kevin Hellyer | 061 484 5578 | kevinh@spire.co.za

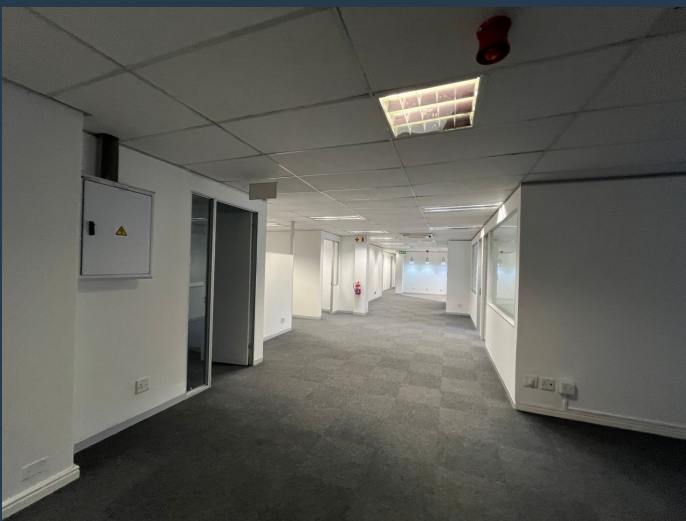
PROPERTY | WITH PURPOSE

R60,350 per month excl. VAT

R170 per m²



www.spire.co.za



CONTACT US



Kevin Hellyer

Candidate Property Practitioner

☎ (021) 6854020

📱 061 484 5578

✉ kevinh@spire.co.za

WEB REF: SCL1872

Kevin Hellyer | 061 484 5578 | kevinh@spire.co.za