

PROPERTY | WITH PURPOSE

R426,800 per month excl. VAT

R200 per m²

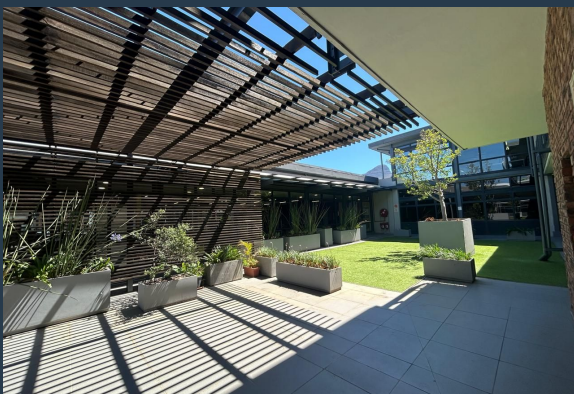


www.spire.co.za

TO LET



2,314 m² Office to rent at Wembley Square 1 in Gardens, Cape Town. Space over the 2nd and 3rd floor of the building. Space will be re-instated and an allowance provided to re-fit the offices. Wembley Square is a mixed-use precinct that brings together the best of urban living and modern business. Nestled on the trendy east side of Cape Town in a vibrant and fast-developing node, Wembley Square offers a chic, cosmopolitan experience designed for the busy professional who seeks a seamless integration of work, life, and play. The building has full access control as well as 24 hour security in place. Ample parking on-site with visitor parking as well. Two of these three buildings are dedicated to commercial and office space, while the third...



WEB REF: SCL2128

Amy Steyn | 061 1257879 | amys@spire.co.za

PROPERTY | WITH PURPOSE

R426,800 per month excl. VAT

R200 per m²



www.spire.co.za

2,314 M² OFFICE TO RENT WEMBLEY SQUARE I GARDENS



PROPERTY DETAILS

▲ Security	Yes	▲ Floor Size	2134m ²
▲ Air Conditioning	Yes	▲ Land Size	2134
		▲ Zoning	Commercial

WEB REF: SCL2128

Amy Steyn | 061 1257879 | amys@spire.co.za

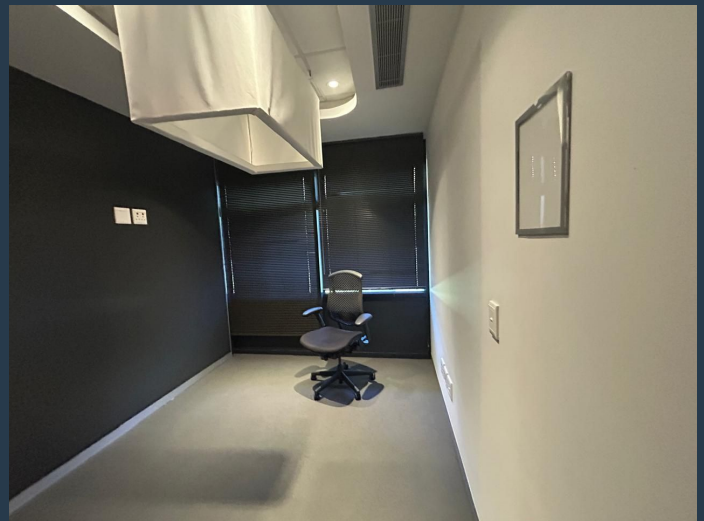
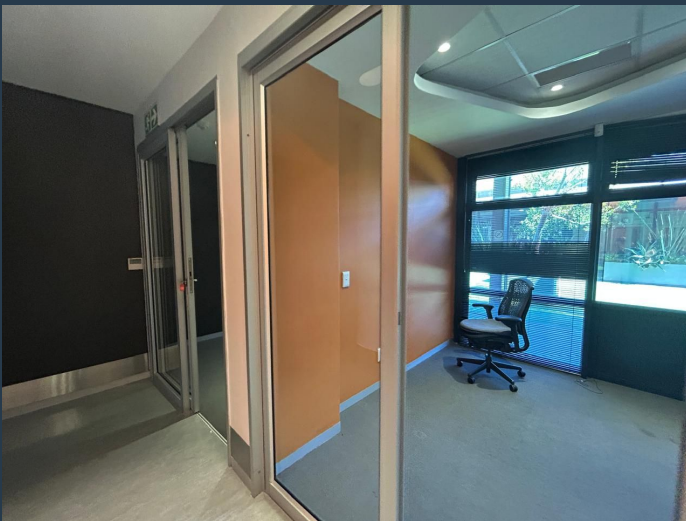
PROPERTY | WITH PURPOSE

R426,800 per month excl. VAT

R200 per m²



www.spire.co.za



CONTACT US



Amy Steyn

Agent

📞 (021) 6854020

📱 061 1257879

✉️ amys@spire.co.za

WEB REF: SCL2128

Amy Steyn | 061 1257879 | amys@spire.co.za