

PROPERTY | WITH PURPOSE

R21,250 per month excl. VAT

R170 per m²

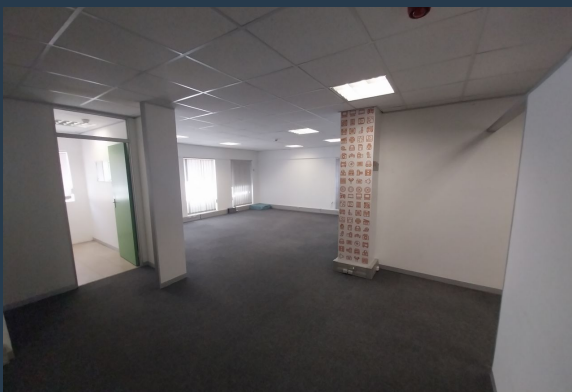
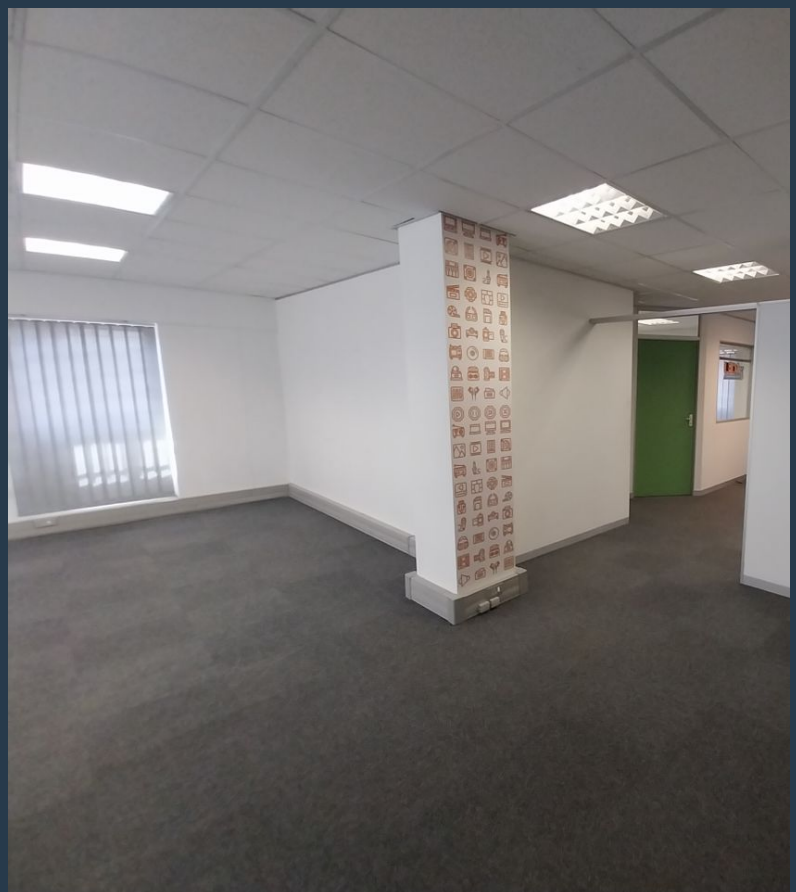


www.spire.co.za

TO LET



125 m² Office to Rent at Clareview business park in Claremont. Ground floor offices located at Clareview Business Park. This office is fully fitted out and ready for a new tenant to move in. The space is on the ground floor, and includes a meeting room a full kitchen internal bathrooms and open plan work space. The office has great security with full access control. Tenants will be able to lease open parking bays in the business park from R700 per bay. The park has fibre for high speed internet services. Clareview Office park is close to all public transport services in the area, and has quick and easy access to surrounding highways. This neat office present excellent value, and is available right now. - Fitted-Out Space: Move-in-ready...



WEB REF: SCL369

Amy Steyn | 061 1257879 | amys@spire.co.za

PROPERTY | WITH PURPOSE

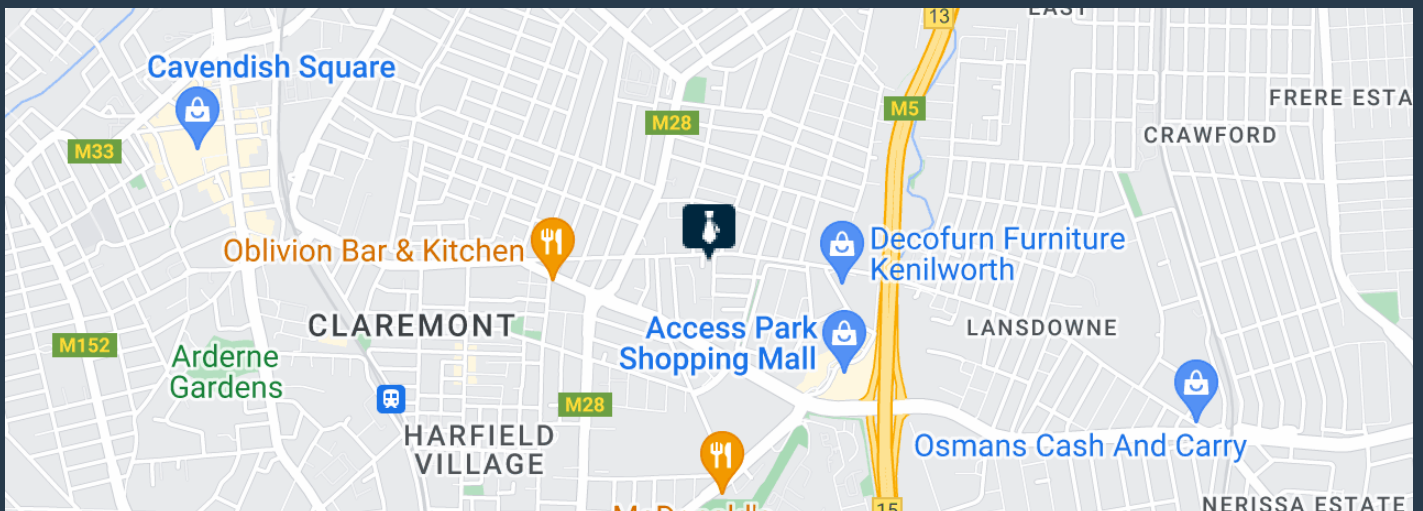
R21,250 per month excl. VAT

R170 per m²



www.spire.co.za

OFFICE SPACE TO RENT IN CLAREMONT | CLAREVIEW OFFICE PARK



PROPERTY DETAILS

▲ Security	Yes	▲ Open Parking	4.0	▲ Floor Size	125m ²
▲ Air Conditioning	Yes			▲ Land Size	125
				▲ Zoning	Commercial

WEB REF: SCL369

Amy Steyn | 061 1257879 | amys@spire.co.za

PROPERTY | WITH PURPOSE

R21,250 per month excl. VAT
R170 per m²



www.spire.co.za



CONTACT US



Amy Steyn
Agent

☎ (021) 6854020
📱 061 1257879
✉ amys@spire.co.za



Kevin Hellyer
Candidate Property Practitioner

☎ (021) 6854020
📱 061 484 5578
✉ kevinh@spire.co.za