

PROPERTY | WITH PURPOSE

R48,791 per month excl. VAT

R225 per m²

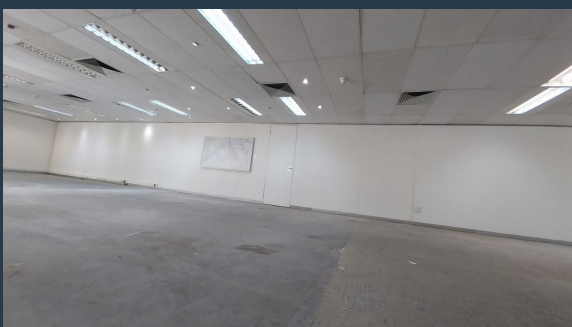
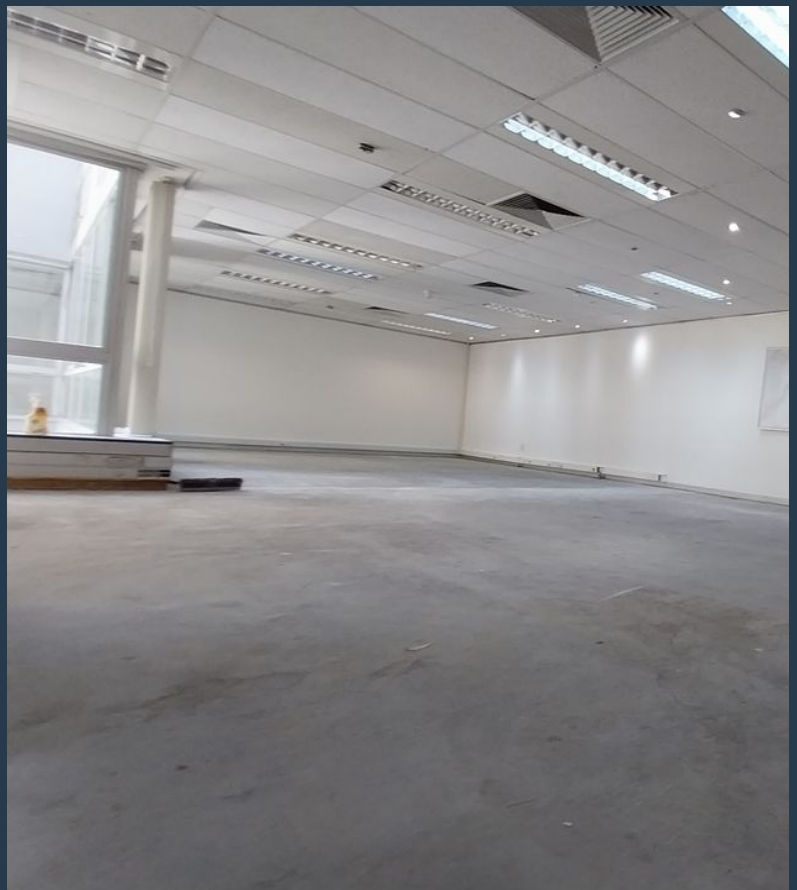


www.spire.co.za

TO LET



216 m² Office Space to Rent in Claremont. A Grade offices located on the 3rd floor in the Sunclare Building. The offices are open plan, white boxed and ready for a brand new fit-out with an allowance provided. This space received loads of natural light. The Sunclare Building has full access control as well as 24 hour security. Tenants can lease basement parking in the building. The Sunclare building is ideally situated in the heart of the Claremont Retail district where tenants can enjoy many coffee shops, restaurants as well as some retail therapy at Cavendish Square. We have been helping businesses just like yours to find their perfect commercial retail or industrial space. Our team of property professionals are ready to find your...



WEB REF: CL2854

Amy Steyn | 061 1257879 | amys@spire.co.za

PROPERTY | WITH PURPOSE

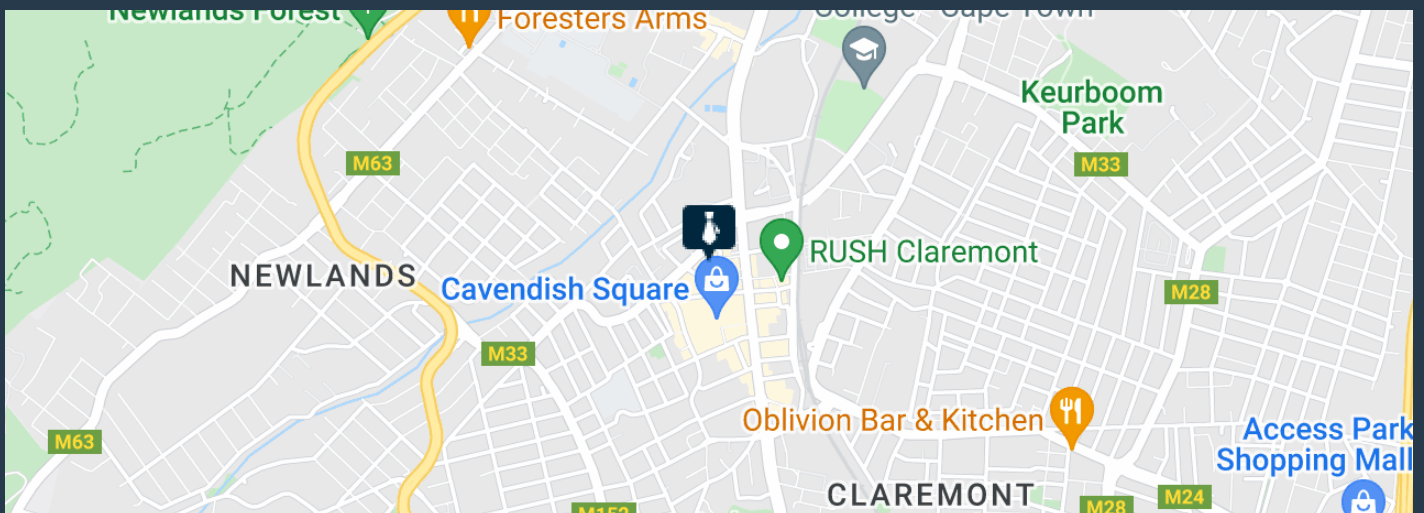
R48,791 per month excl. VAT

R225 per m²



www.spire.co.za

216 M² OFFICE TO RENT SUNCLARE BUILDING IN CLAREMONT



PROPERTY DETAILS

▲ Security	Yes	▲ Basement Parking	2.0	▲ Floor Size	216m ²
▲ Air Conditioning	Yes			▲ Land Size	216
				▲ Zoning	Commercial

WEB REF: CL2854

Amy Steyn | 061 1257879 | amys@spire.co.za

PROPERTY | WITH PURPOSE

R48,791 per month excl. VAT
R225 per m²



www.spire.co.za



CONTACT US



Amy Steyn
Agent

☎ (021) 6854020
📱 061 1257879
✉ amys@spire.co.za



Kevin Hellyer
Candidate Property Practitioner

☎ (021) 6854020
📱 061 484 5578
✉ kevinh@spire.co.za

WEB REF: CL2854

Amy Steyn | 061 1257879 | amys@spire.co.za