

PROPERTY | WITH PURPOSE

R268,800 per month excl. VAT

R200 per m²



www.spire.co.za

TO LET



1,344 m² Office Space to Rent in Claremont at The Grove Exchange. In the heart of Claremont on the corner of Grove and Main Road these are prime office spaces. The office is currently being white boxed and has a wrap around open and versatile space that can be utilized to suit just about any business need. There are also a few glassed off office / meeting spaces already fitted. As per the video you can see that there is also great natural lighting. Ample basement parking is available which is an extra gem in the very busy Claremont area. The whole first floor is your dedicated space and there is also a kitchenette and his and her restrooms as you exit the elevator. This floor can be sub-divided if required. Claremont, located in the...



WEB REF: CL250

Amy Steyn | 061 1257879 | amys@spire.co.za

PROPERTY | WITH PURPOSE

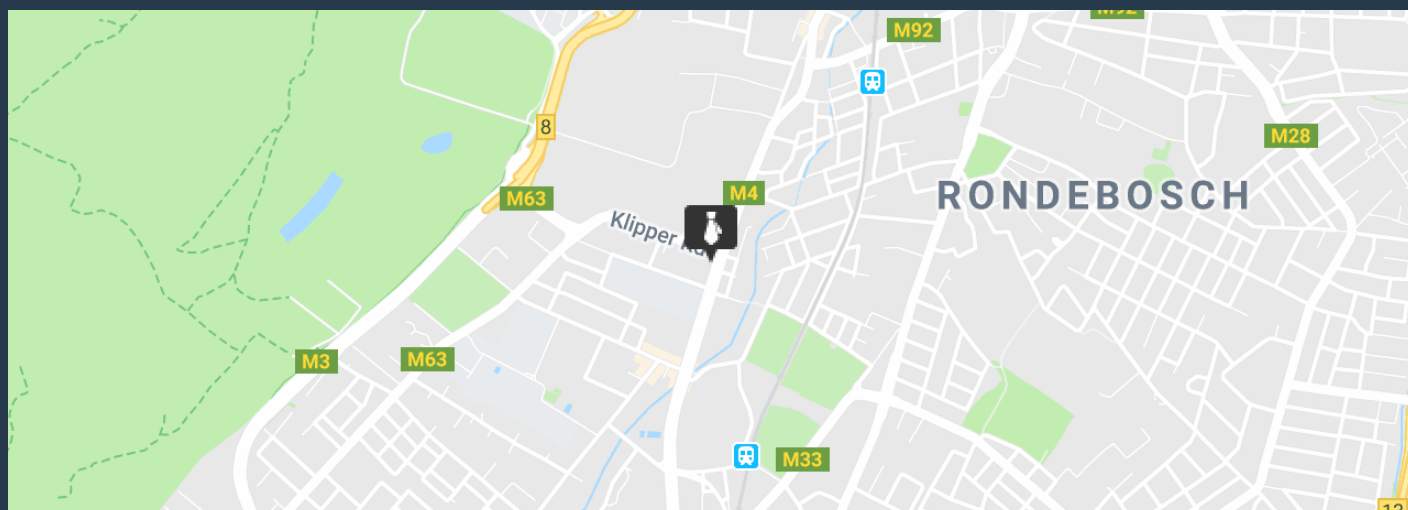
R268,800 per month excl. VAT

R200 per m²



www.spire.co.za

1,344 M² OFFICE SPACE TO RENT CLAREMONT I GROVE EXCHANGE



PROPERTY DETAILS

▲ Security	Yes	▲ Basement Parking	26.0	▲ Floor Size	1344m ²
▲ Air Conditioning	Yes			▲ Land Size	1344
				▲ Zoning	Commercial

WEB REF: CL250

Amy Steyn | 061 1257879 | amys@spire.co.za

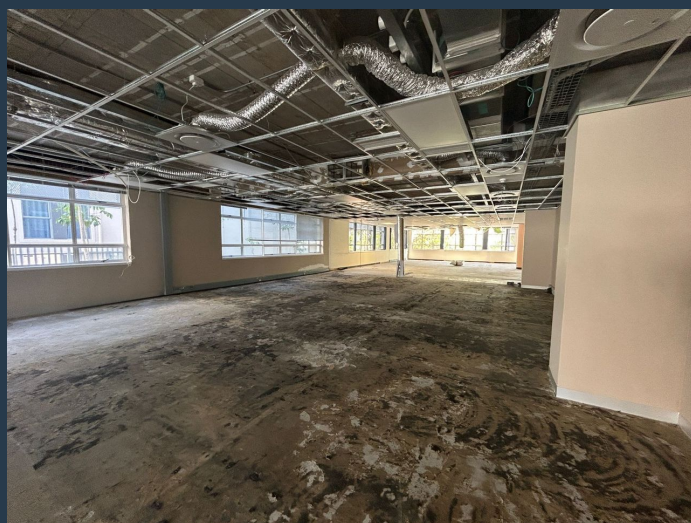
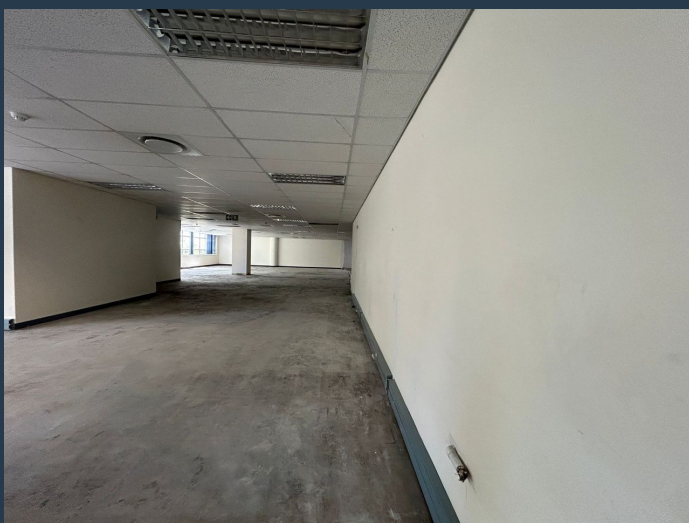
PROPERTY | WITH PURPOSE

R268,800 per month excl. VAT

R200 per m²



www.spire.co.za



CONTACT US



Amy Steyn
Agent

☎ (021) 6854020
📱 061 1257879
✉ amys@spire.co.za



Kevin Hellyer
Candidate Property Practitioner

☎ (021) 6854020
📱 061 484 5578
✉ kevinh@spire.co.za