

PROPERTY | WITH PURPOSE

**R42,180** per month excl. VAT

R190 per m<sup>2</sup>

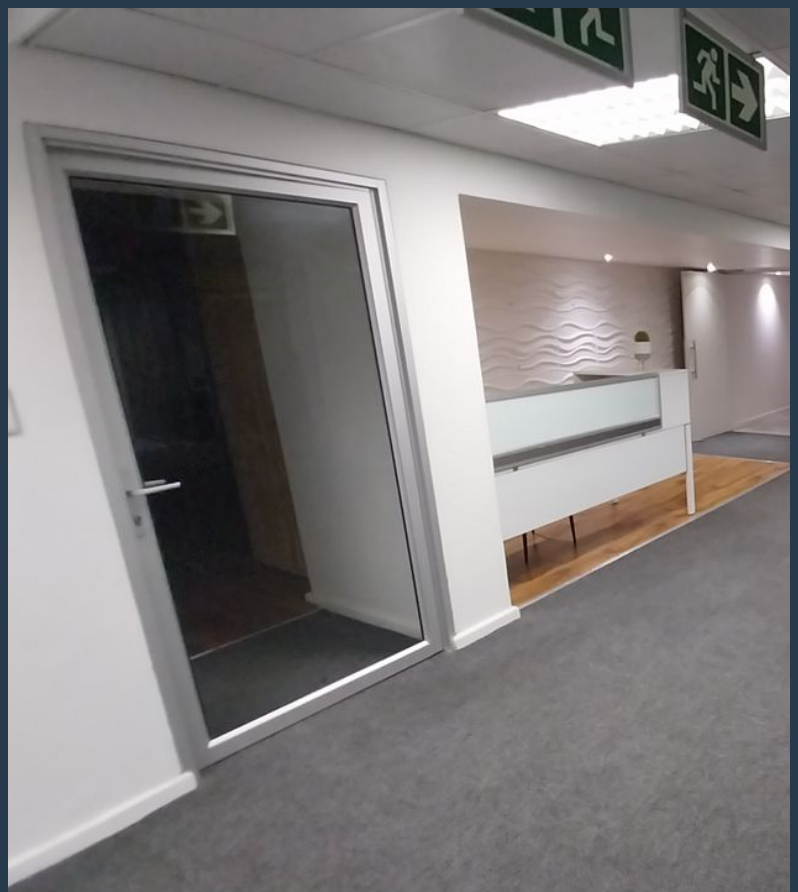


[www.spire.co.za](http://www.spire.co.za)

**TO LET**



222 m<sup>2</sup> Office to Rent at the Sunclare Building in Claremont. Fully fitted out space on the mezzanine level. This space has a large open plan work area with separate office suites, meeting room and a full kitchen. The Sunclare Building has full access control as well as 24 hour security. Parking available. The Sunclare Building is easily accessible by both public and private transport. The Claremont train station is within walking distance, and several major bus routes pass through the area, ensuring that employees and clients can reach the building with ease. For those driving, the building offers secure parking facilities, including both basement and covered parking options, providing peace of mind for tenants and visitors alike. The...



WEB REF: CL1657

Amy Steyn | 061 1257879 | [amys@spire.co.za](mailto:amys@spire.co.za)

PROPERTY | WITH PURPOSE

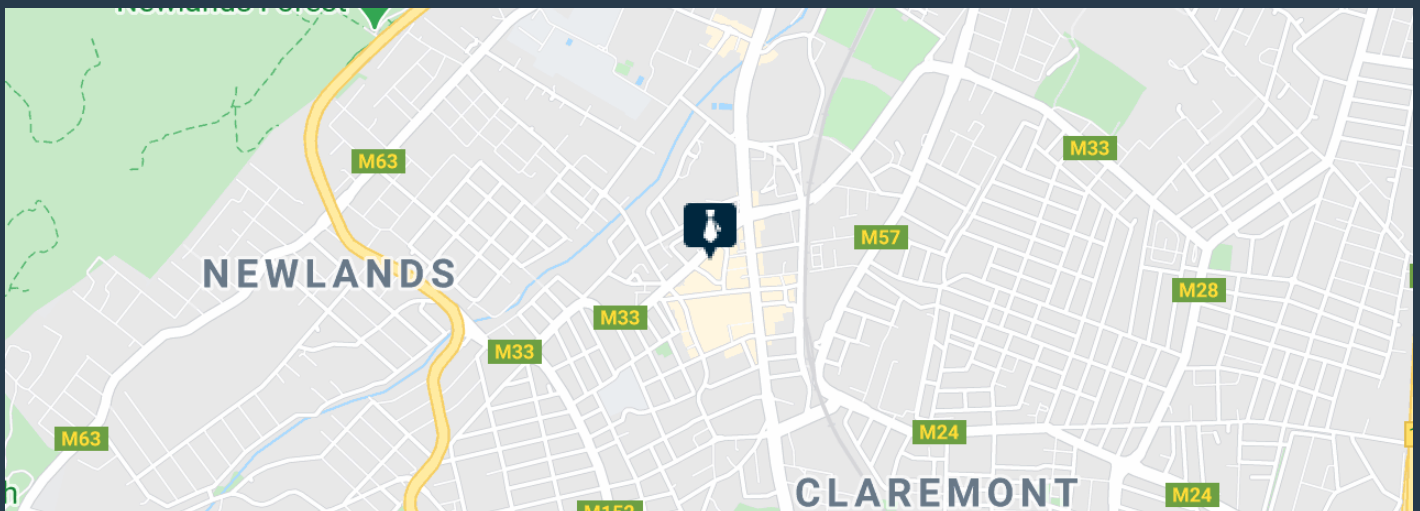
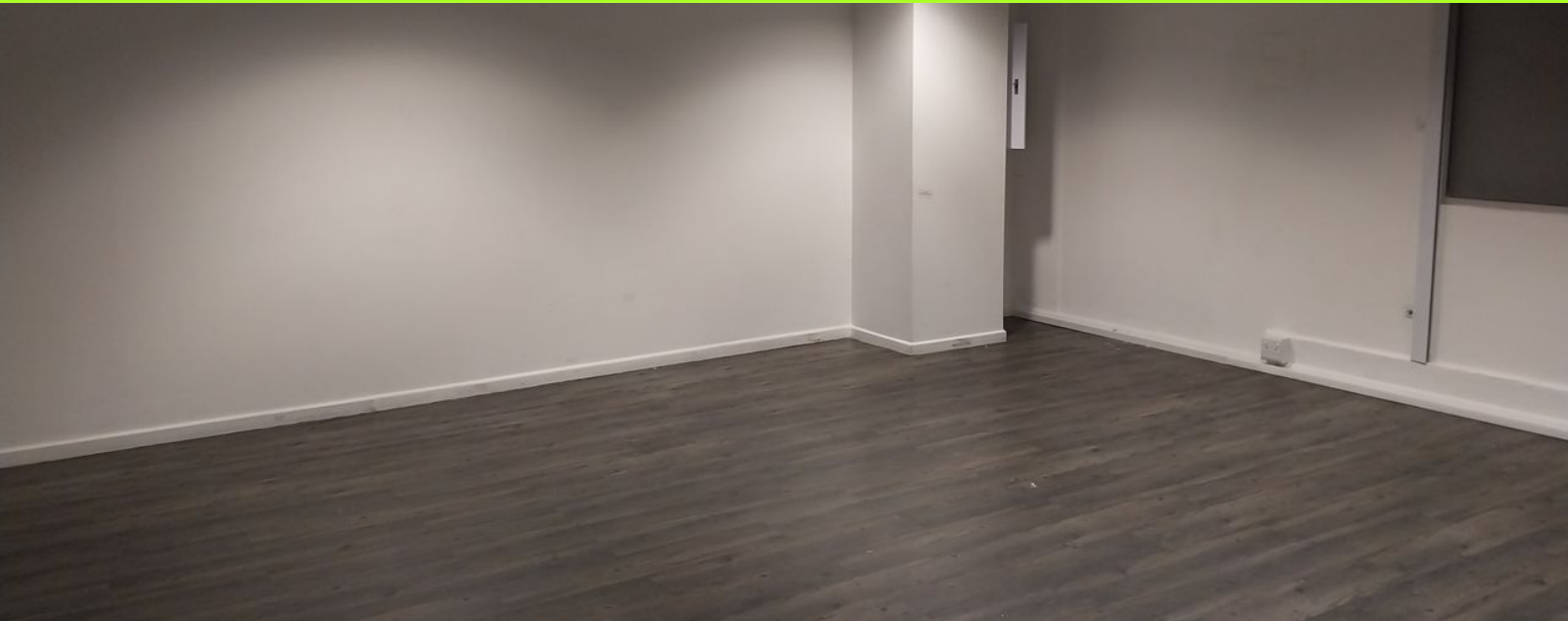
**R42,180** per month excl. VAT

R190 per m<sup>2</sup>



[www.spire.co.za](http://www.spire.co.za)

## OFFICE SPACE TO RENT CLAREMONT | SUNCLARE BUILDING



### PROPERTY DETAILS

▲ Security	Yes	▲ Basement Parking	4.0	▲ Floor Size	222m <sup>2</sup>
▲ Air Conditioning	Yes			▲ Land Size	222
				▲ Zoning	Commercial

WEB REF: CL1657

Amy Steyn | 061 1257879 | [amys@spire.co.za](mailto:amys@spire.co.za)



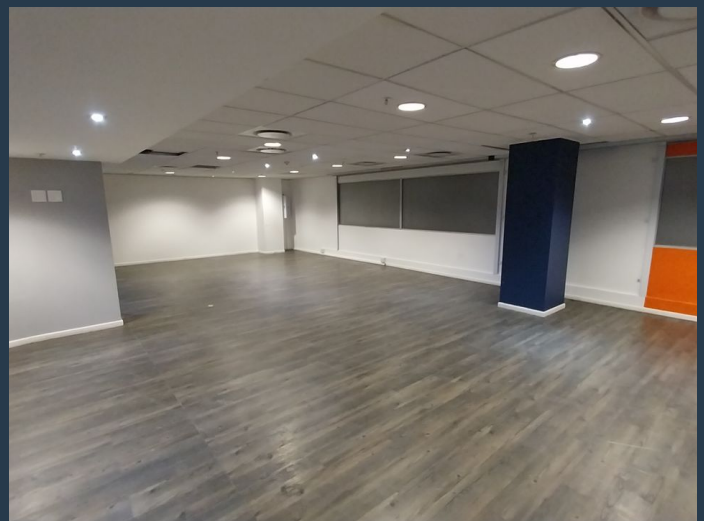
PROPERTY | WITH PURPOSE

**R42,180** per month excl. VAT

R190 per m<sup>2</sup>



[www.spire.co.za](http://www.spire.co.za)



## CONTACT US



**Amy Steyn**

Agent

☎ (021) 6854020

📱 061 1257879

✉ [amys@spire.co.za](mailto:amys@spire.co.za)



**Kevin Hellyer**

Candidate Property Practitioner

☎ (021) 6854020

📱 061 484 5578

✉ [kevinh@spire.co.za](mailto:kevinh@spire.co.za)

WEB REF: CL1657

Amy Steyn | 061 1257879 | [amys@spire.co.za](mailto:amys@spire.co.za)