

PROPERTY | WITH PURPOSE

R115,000 per month excl. VAT

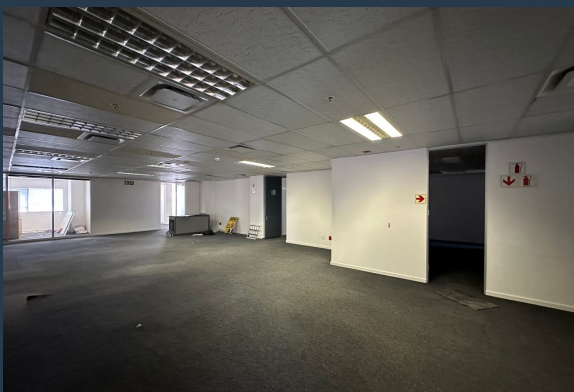
R115 per m²



www.spire.co.za

TO LET

1,000 m² Office to rent in Cape Town CBD. Plug and play office space on the 9th floor at 8 Riebeeck Street. The space is currently fitted out and includes manager offices, meeting or training rooms, staff pause area and large open plan work space. Sufficient ablution facilities with quick and easy access to the central lobby. Parking available for staff. The building is located adjacent to the public transport network along Adderley Street. The Cape Town CBD is a hive of activity and the very core of the city where all business ventures, social outings, and nightly excursions blend into one. With a diverse range of coffee shops, restaurants, bars, nightclubs, museums, craft markets, shopping malls, and hotels, the Cape Town CBD is the...



WEB REF: SCL1525

Amy Steyn | 061 1257879 | amys@spire.co.za

PROPERTY | WITH PURPOSE

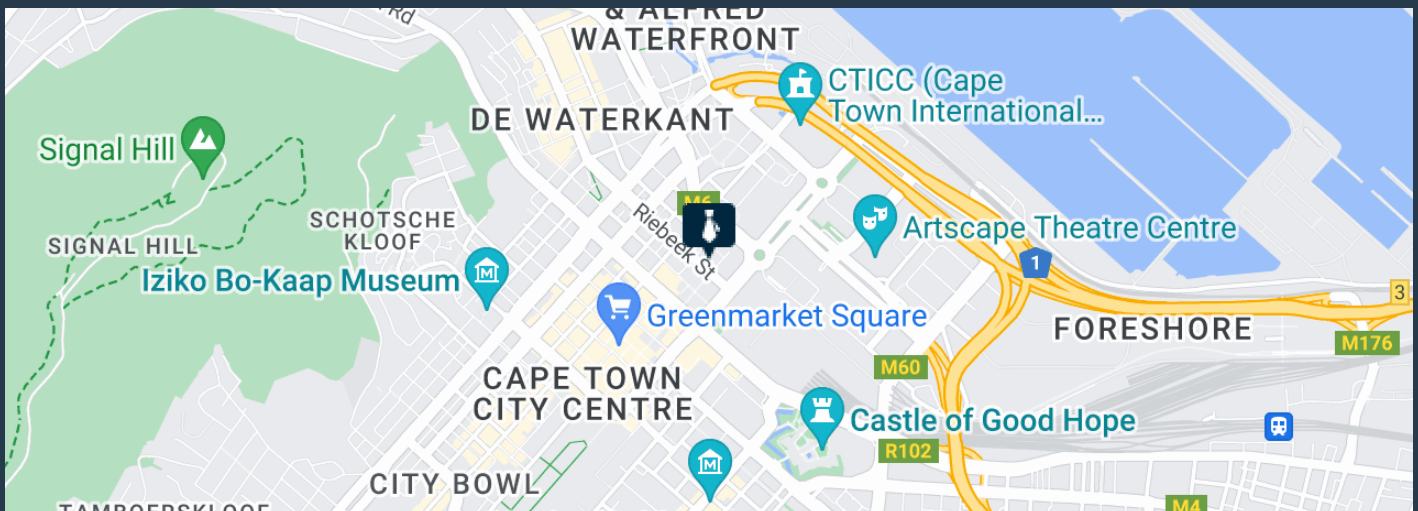
R115,000 per month excl. VAT

R115 per m²



www.spire.co.za

OFFICE SPACE TO RENT CAPE TOWN CBD | 8 RIEBEEK STREET



PROPERTY DETAILS

▲ Security	Yes	▲ Basement Parking	40.0	▲ Floor Size	1000m ²
▲ Air Conditioning	Yes			▲ Land Size	1000
				▲ Zoning	Commercial

WEB REF: SCL1525

Amy Steyn | 061 1257879 | amys@spire.co.za

PROPERTY | WITH PURPOSE

R115,000 per month excl. VAT

R115 per m²



www.spire.co.za



CONTACT US



Amy Steyn
Agent

☎ (021) 6854020
📱 061 1257879
✉ amys@spire.co.za



Kevin Hellyer
Candidate Property Practitioner

☎ (021) 6854020
📱 061 484 5578
✉ kevinh@spire.co.za

WEB REF: SCL1525

Amy Steyn | 061 1257879 | amys@spire.co.za