

PROPERTY | WITH PURPOSE

**R26,220** per month excl. VAT

R95 per m<sup>2</sup>

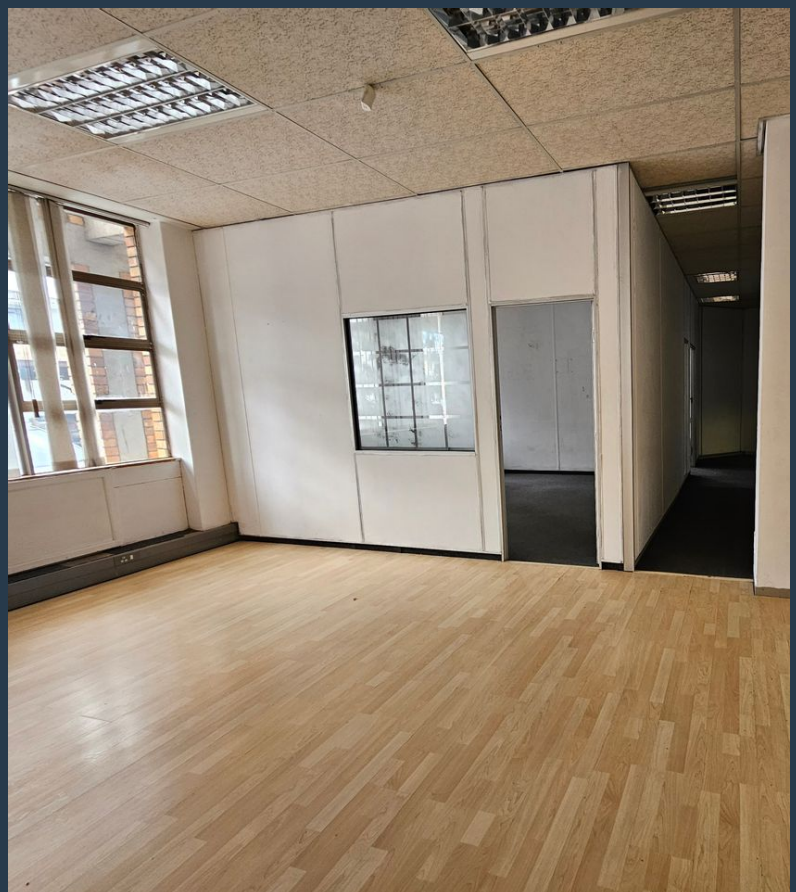
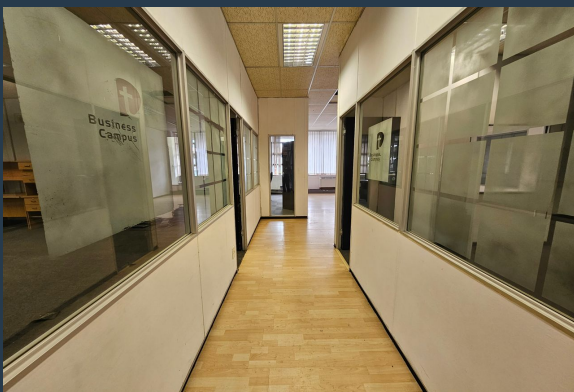


[www.spire.co.za](http://www.spire.co.za)

**TO LET**



276 m<sup>2</sup> Office to rent on the ground floor at Louville Place in Bellville Central. Fitted out office space with partitioned offices as well as meeting and training rooms. Louville Place is a well-maintained B-grade office building located in Bellville Central, offering flexible office space for multiple tenants. This five-storey building provides a professional working environment with secure access and ample natural light. Large wrap-around windows ensure a bright and comfortable workspace, while the building's central location places tenants within walking distance of key business and government offices. Louville Place is conveniently located a block away from Voortrekker Road, placing tenants near major businesses, government...



WEB REF: SCL2261

Kevin Hellyer | 061 484 5578 | [kevinh@spire.co.za](mailto:kevinh@spire.co.za)



PROPERTY | WITH PURPOSE

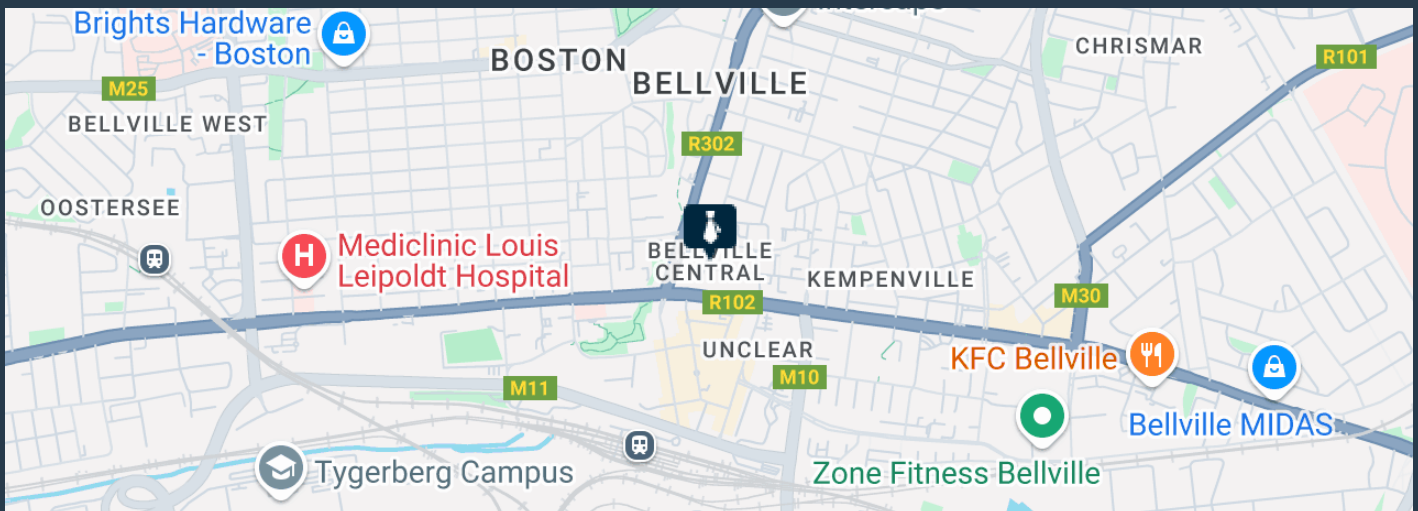
**R26,220** per month excl. VAT

R95 per m<sup>2</sup>



[www.spire.co.za](http://www.spire.co.za)

## 276 M<sup>2</sup> OFFICE TO RENT BELLVILLE CENTRAL - LOUWVILLE PLACE



### PROPERTY DETAILS

▲ Security	Yes	▲ Floor Size	276m <sup>2</sup>
▲ Air Conditioning	Yes	▲ Land Size	276
		▲ Zoning	Commercial

WEB REF: SCL2261

Kevin Hellyer | 061 484 5578 | [kevinh@spire.co.za](mailto:kevinh@spire.co.za)

PROPERTY | WITH PURPOSE

**R26,220** per month excl. VAT

R95 per m<sup>2</sup>



[www.spire.co.za](http://www.spire.co.za)



## CONTACT US



**Kevin Hellyer**

Candidate Property Practitioner

☎ (021) 6854020

📱 061 484 5578

✉ [kevinh@spire.co.za](mailto:kevinh@spire.co.za)

WEB REF: SCL2261

Kevin Hellyer | 061 484 5578 | [kevinh@spire.co.za](mailto:kevinh@spire.co.za)