

PROPERTY | WITH PURPOSE

R25,000,000



www.spire.co.za

FOR SALE



WORLDVIEW HOUSE

150 Kelvin Drive

Commercial Office Building for Sale in Woodmead. This stand-alone commercial building offers approximately 1,932m² of prime office space, situated on a beautifully landscaped 5,000m² stand. The property features backup water supply, standby generators, and ample on-site and basement parking. Located in a quiet cul-de-sac, it provides convenient access from both the N1 Woodmead off-ramp and Rivonia Road, making it highly accessible for staff and visitors alike. ±1,932m² of office space on a landscaped ±7500m² stand. Designed for flexibility, the building is easily subdivisible and comprises a blend of open-plan workspaces and private offices. A central internal courtyard enhances the space with abundant natural light, creating a pleasant...



WEB REF: SCL2374

Brandon Munyanyi | 0746705886 | brandonm@spire.co.za

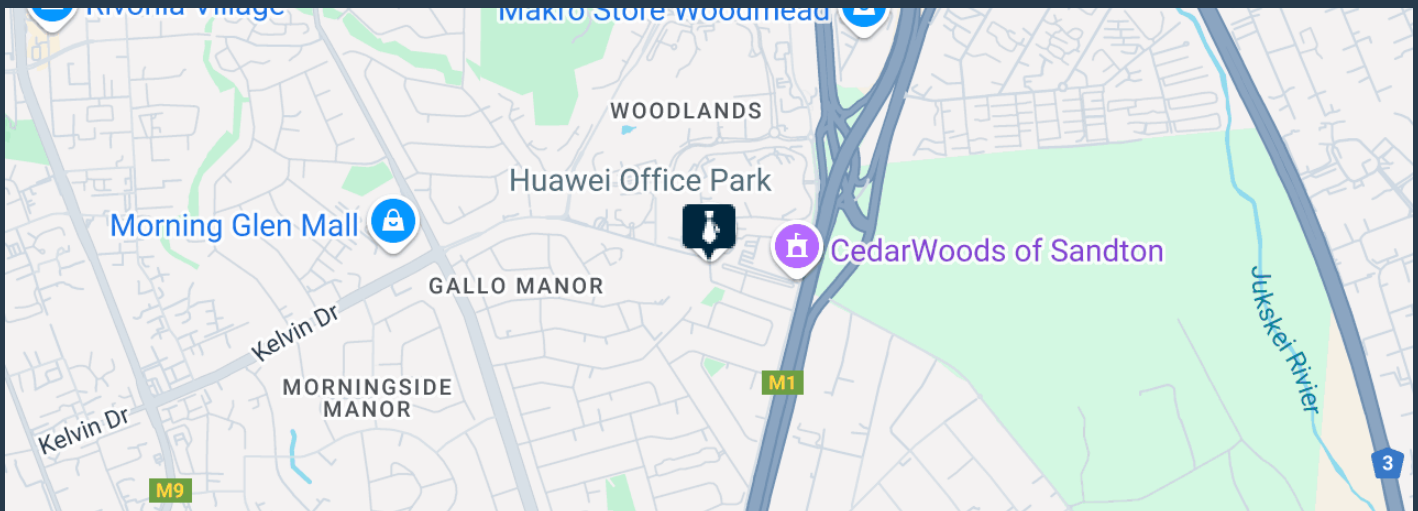
PROPERTY | WITH PURPOSE

R25,000,000



www.spire.co.za

COMMERCIAL OFFICE BUILDING FOR SALE IN WOODMEAD



PROPERTY DETAILS

| | | | | | |
|--------------------|-----|--------------------|------|--------------|--------------------|
| ▲ Security | Yes | ▲ Open Parking | 30.0 | ▲ Floor Size | 1932m ² |
| ▲ Air Conditioning | Yes | ▲ Covered Parking | 15.0 | ▲ Land Size | 2000 |
| | | ▲ Basement Parking | 15.0 | ▲ Zoning | Commercial |

WEB REF: SCL2374

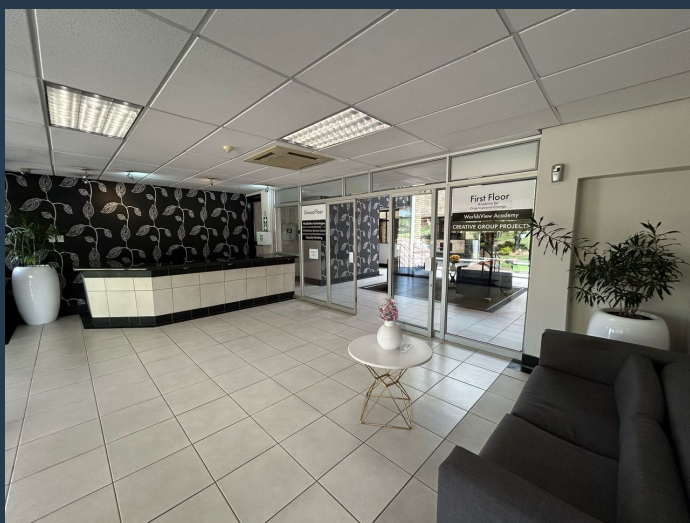
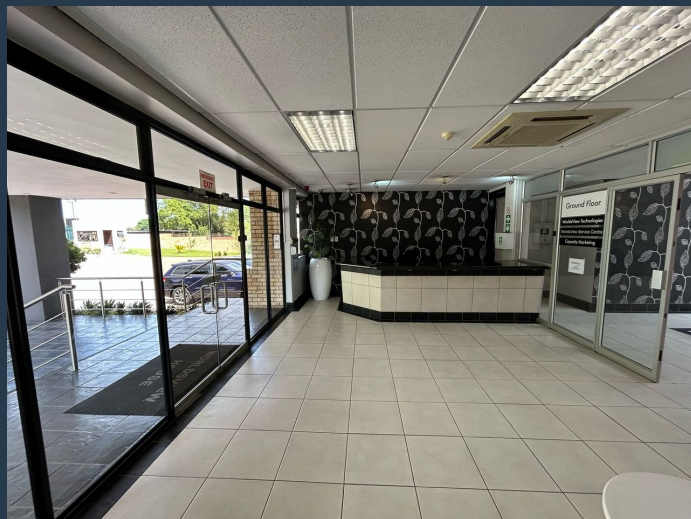
Brandon Munyanyi | 0746705886 | brandonm@spire.co.za

PROPERTY | WITH PURPOSE

R25,000,000



www.spire.co.za



CONTACT US



Brandon Munyanyi

Agent

☎ (011) 2685871

📱 0746705886

✉ brandonm@spire.co.za

WEB REF: SCL2374

Brandon Munyanyi | 0746705886 | brandonm@spire.co.za